

InnoVfoam B.V.

Manually operated fire water monitor



InnoVfoam B.V.

Manually operated fire water monitor

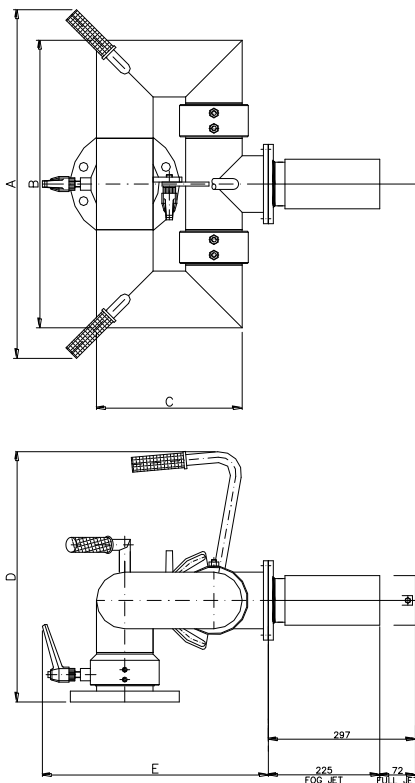
DESCRIPTION

The InnoVfoam fire monitor type FWM was designed as compact and reliable device. Horizontal and vertical positioning is set manually with help of levers (FWM-3/4/6) or hand wheels (FWM-8), which enable safe manual operation. The Fog/Jet nozzle type BA can be adjusted, by hand, between full jet and spray mode.

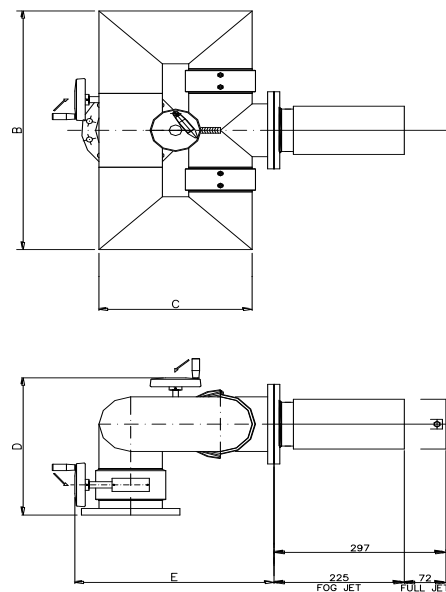
The capacity of the unit can be manually adjusted such that the best performance possible at the given water pressure in regard to throw length and jet pattern is achieved. The monitor can be equipped with a foam branch pipe or a water branch pipe.

DRAWINGS

Model FWM-3/4/6



Model FWM-8



InnoVfoam B.V.

Manually operated fire water monitor

MODEL	CAPACITY LPM	INLET CONNECTION	OUTLET CONNECTION	A mm	B mm	C mm	D mm	E mm	WEIGHT (KG.)
FWM-3	3.000	3" or 80 DIN	3" flange	620	470	240	450	395	24
FWM-4	5.000	4" or 100 DIN	4" flange	705	580	295	505	460	36
FWM-6	10.000	6" or 150 DIN	6" flange	900	830	420	675	595	74
FWM-8	20.000	8" or 200 DIN	8" flange	-	990	530	550	700	113
The monitor is equipped with nozzle type BA									
BA-2	Up to 1.500	3" grooved	-	-	-	-	-	-	4
BA-3	Up to 2.500	3" grooved	-	-	-	-	-	-	5
BA-4	Up to 8.500	4" grooved	-	-	-	-	-	-	7
BA-6	Up to 20.000	6" or 8" grooved	-	-	-	-	-	-	11

CHARACTERISTICS FWM MONITOR

Design pressure: 16 bar

Max. working pressure: 16 bar

Test pressure: 24 bar

Rotation: 360°

Elevation: + 75° - 75°

Body material: Stainless steel

Finish: Primer and red epoxy paint (RAL 3000)

CHARACTERISTICS BA NOZZLE

Body material: Stainless Steel

Nozzle manually adjustable: From jet to spray

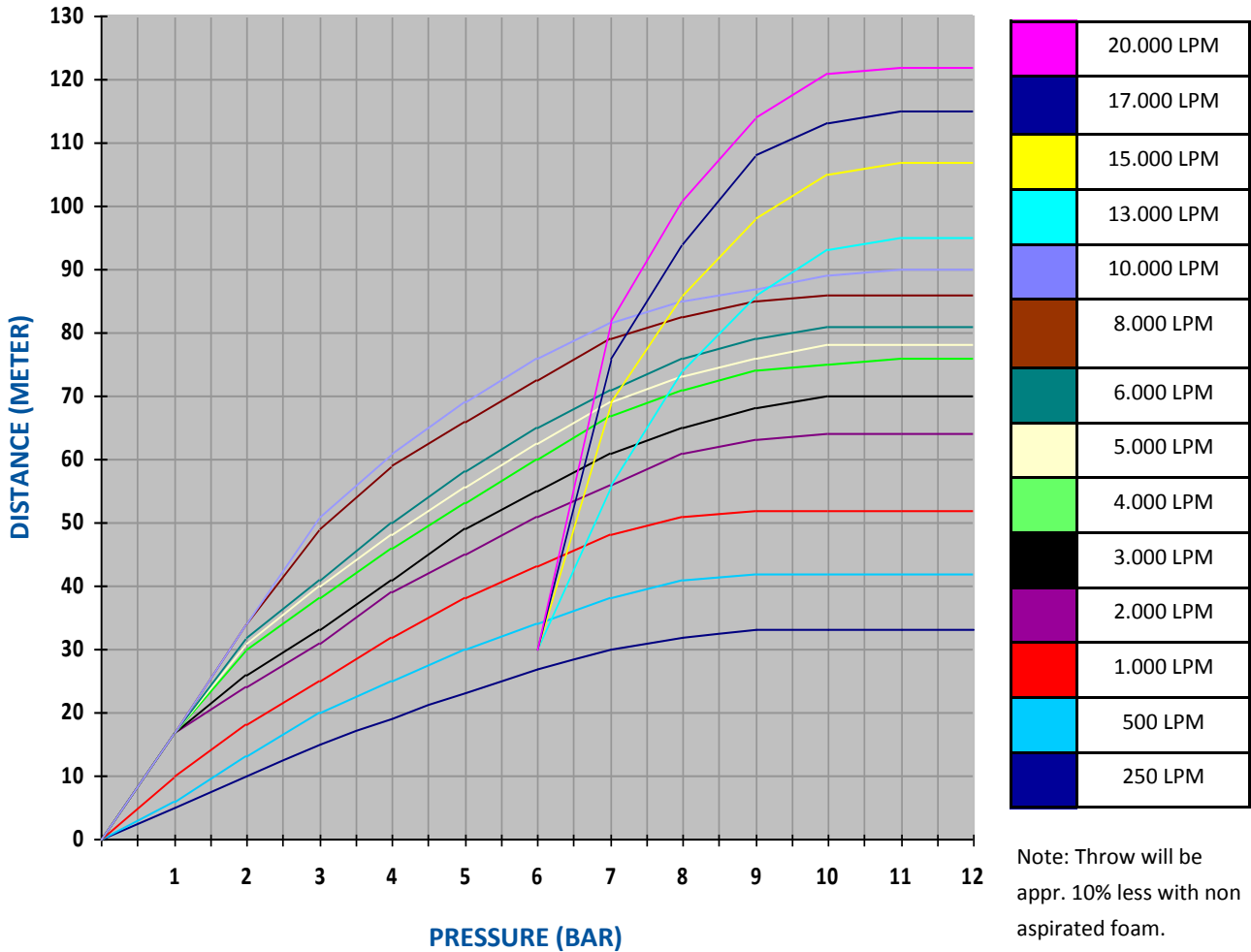
Max. Spray angle: 120°



InnoVfoam B.V.

Manually operated fire water monitor

THROW LENGTH FWM MONITOR RANGE

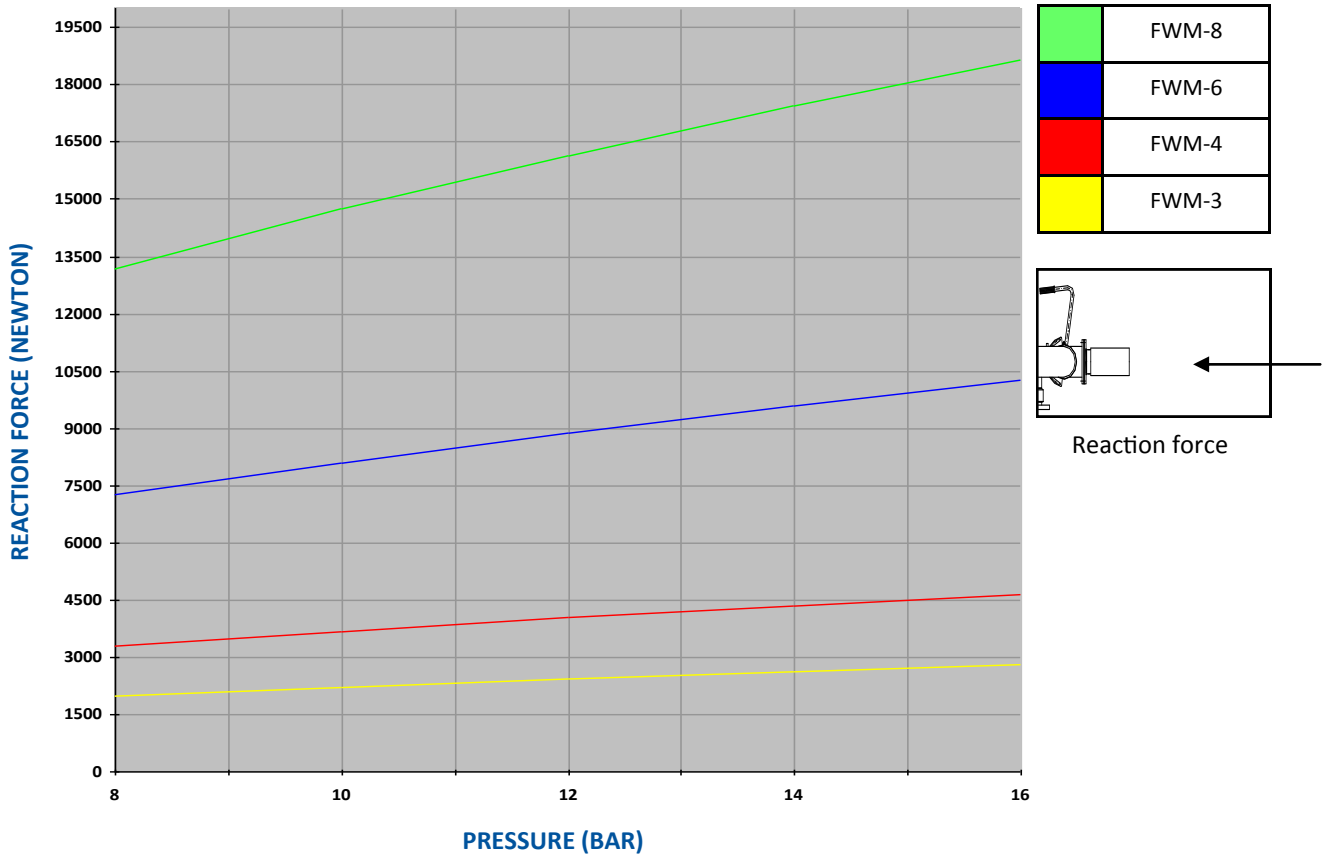


Note: Throw will be appr. 10% less with non aspirated foam.
 Throw length (appr.) under windstill conditions

InnoVfoam B.V.

Manually operated fire water monitor

REACTION FORCE FWM MONITOR RANGE



Jet performance with AFFF



Spray performance with AFFF

InnoVfoam B.V.

Manually operated fire water monitor

ORDER INFORMATION

TYPE	ORDER NR.	INLET	NOZZLE TYPE	ORDER NR.
FWM-3A	300-FWM-3A	3" ANSI	BA-1	380-BA-1
FWM-3D	300-FWM-3D	80 DIN	BA-1	380-BA-1
FWM-4A	300-FWM-4A	4" ANSI	BA-2	380-BA-2
FWM-4D	300-FWM-4D	100 DIN	BA-2	380-BA-2
FWM-6A	300-FWM-6A	6" ANSI	BA-6	380-BA-6
FWM-6D	300-FWM-6D	150 DIN	BA-6	380-BA-6
FWM-8A	300-FWM-8A	8" ANSI	BA-6	380-BA-6
FWM-8D	300-FWM-8D	200 DIN	BA-6	380-BA-6

